

1980

GOLF



SMITHFIELD CARAGEWAYS
BIRMINGHAM, S.



Model illustrated: Golf L

The Golf.

If ever there was a car designed to capture the imagination of today's motorist, the Volkswagen Golf is it.

And capture it has. To the tune of 3,000,000 discerning motorists.

What's the attraction? Style has a lot to do with it.

The Golf in any of its trim packages is a good looker.

Compact overall dimensions yet interior room to spare is another big Golf asset. It might surprise you to know, for instance, that in the back seat of a Golf there's more shoulder room than in a Daimler Sovereign (Source: Autocar). All



Three million owners can't be wrong.

seats up, the Golf takes five full size travellers, in comfort.

Then there's power. Thrifty power in a choice of four petrol engines (1100 cc, 1300 cc, 1460 cc and 1600 cc) the first three of which run happily on 2 star (91 RON) petrol and one diesel engine (1500 cc).

If you're looking for a car that meets today's tough motoring criteria head on for economy, reliability, compactness outside, capaciousness inside, do what 3,000,000 have done.

Drive the Golf.



Model illustrated: Golf L

The Golf.

There are larger cars around that can't even begin to take on the loads that the deceptive Golf can handle.

It all starts with that high, wide and handsome tailgate. It opens right up to roof height

revealing 12.4 cu ft. of luggage space beneath a prying-eye-proof hinged cover. Enough space for a good few suitcases or the results of a marathon shopping spree.

Drop the back seat and back rest and you've



For the big load ahead.

trebled the loadspace to an enormous 38.9 cu.ft. Or enough space for the Afghan, new fridge or Chippendale chest.

Incidentally, when fully loaded the Golf's rearward vision can be enhanced by the addi-

tion of an extra rear view mirror on the passenger door.

So if you thought the Golf was simply a fantastic people carrier and nothing more, this must take a load off your mind.

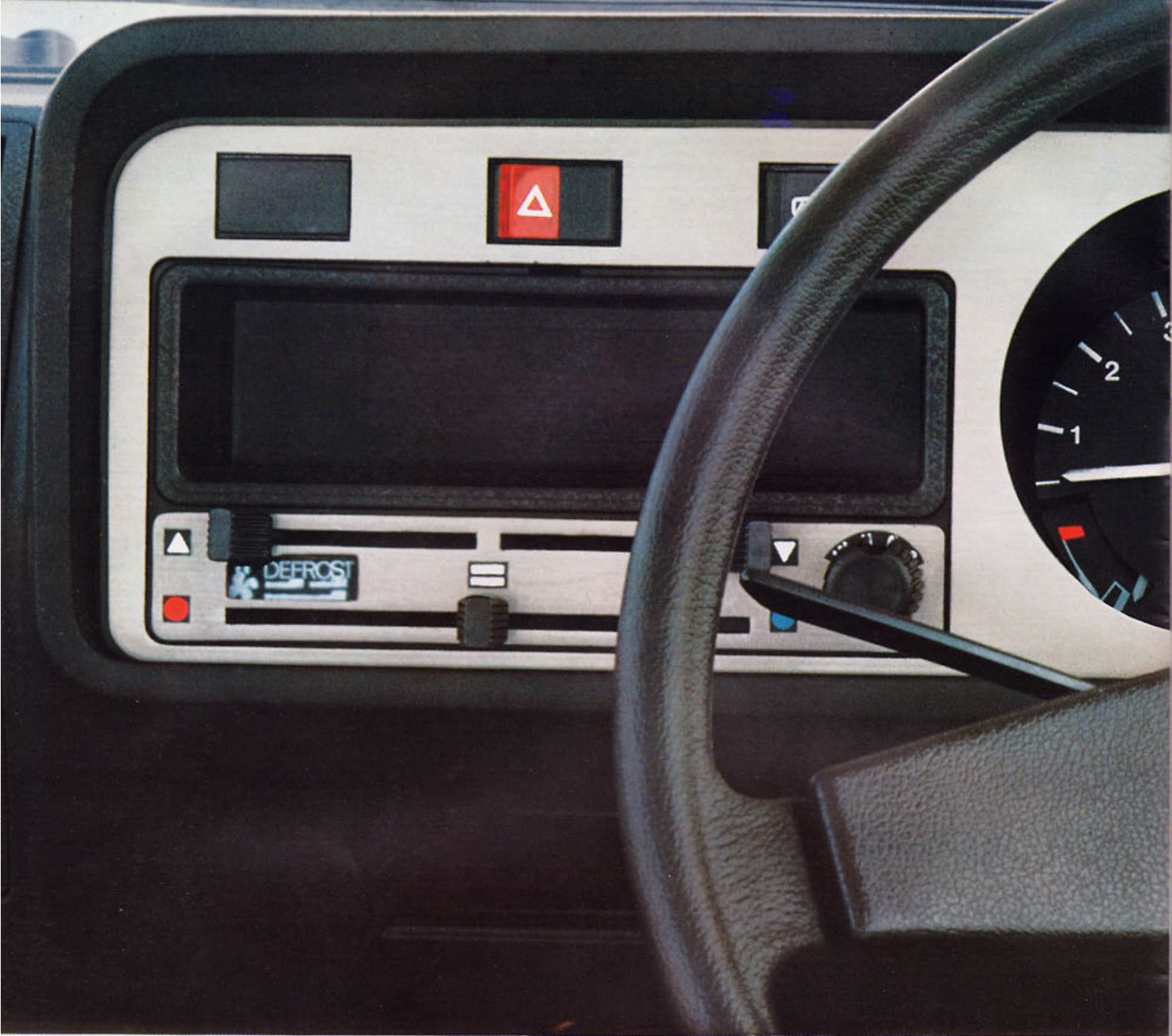


Illustration: Golf GLS dashboard

The Golf.

Underneath the stylish exterior of the Golf lies a perfect example of solid, reliable Volkswagen engineering.

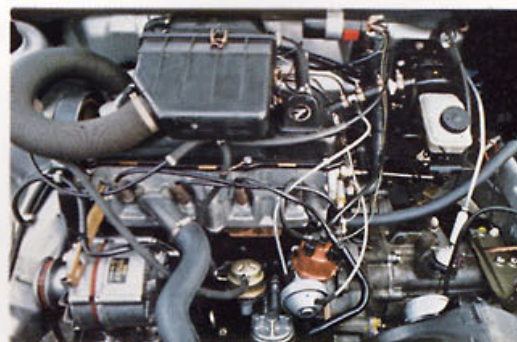
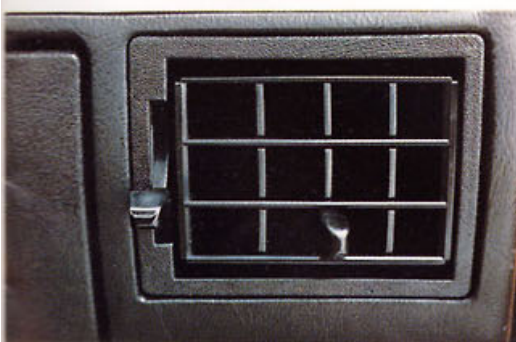
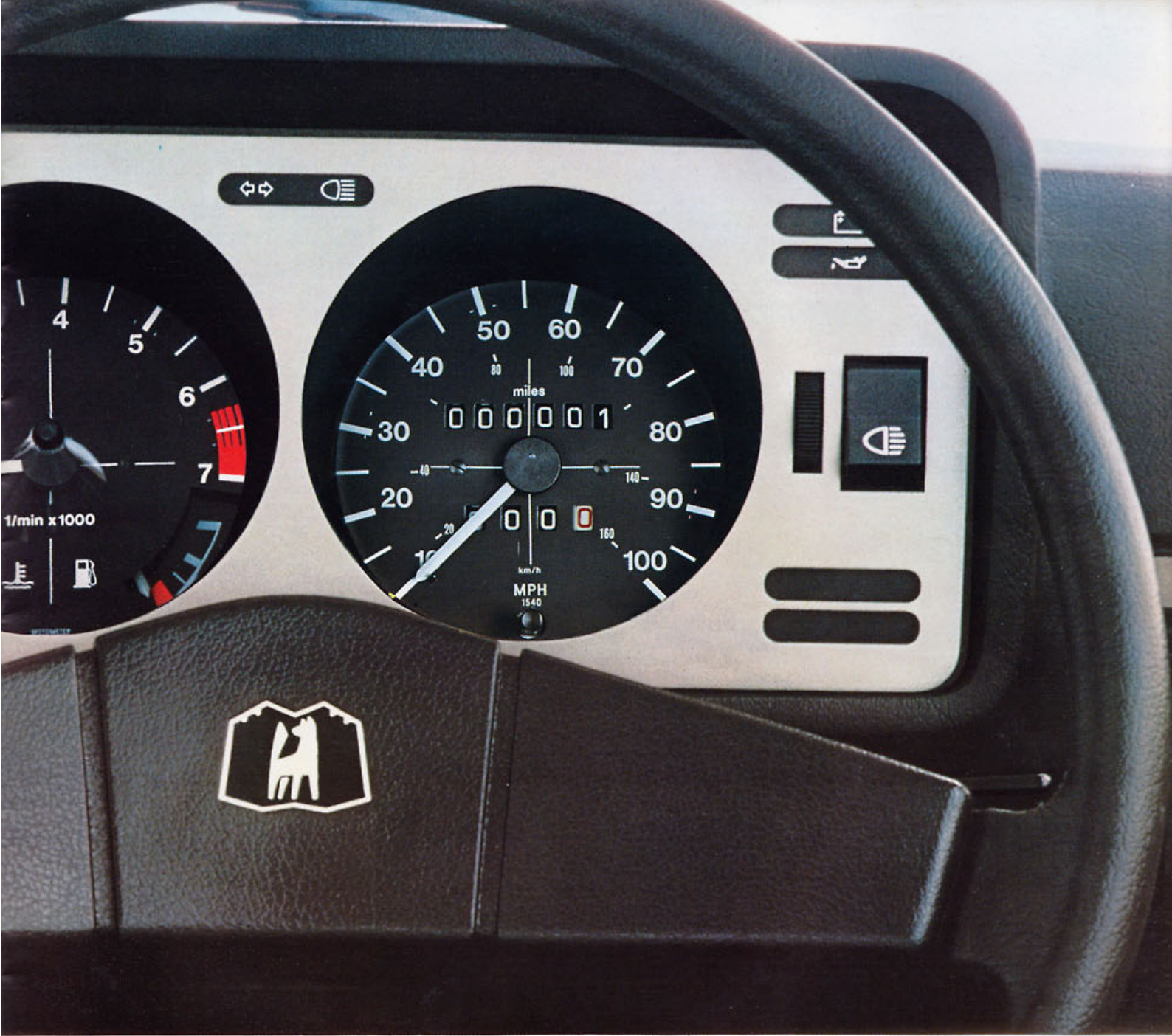
Up front, a choice of four transversely mounted engines. An 1100 cc 50 bhp (DIN) petrol engine is available with the standard and L Golf and gives 0—50 mph acceleration in 10.0 secs. and a top speed of 87 mph.

The 1300 cc 60 bhp petrol engine powers the

Golf LS and GLS and has a 0—50 capability of 8.6 secs. with a top speed of 93 mph.

Automatic transmission is available on the GLS 1460 cc version, which develops 70 bhp (DIN) and a top speed of 95 mph.

At the top of the class is the 1600 cc 110 bhp (DIN) petrol engine which drives the Golf GTi. Top speed is 112 mph and acceleration from 0—50 takes only 5.9 secs.



Technically, a lot going for you.

The Golf L can also be specified with the remarkably economical 1500 cc 50 bhp (DIN) diesel engine with 0—50 mph acceleration in 11.5 secs and a top speed of around 87 mph.

A feature of every Golf is its exceptional suspension and steering geometry. A suspension strut front axle for accurate tracking. A combined trailing arm centre-coupled rear axle for guaranteed toe-in and camber stability.

And a stabilised steering/braking system incorporating negative roll radius which keeps you straight, even if you dip a wheel into a soft shoulder.

All Golfs pull out the stops in braking sophistication, too. Every model has a diagonally divided dual circuit system with discs up front.

In its class (and a few others as well) the Golf is technically way ahead.



Illustration: Golf GLS interior

The Golf.

As much as the Golf seems to shrink in town traffic situations, it equally seems to expand on long, open road journeys.

The reason is comfort. Comfort in terms of space. Space for five with more rear leg room than you'll find even in cars like the Leyland Princess or Chrysler Alpine (source: Autocar).

Comfort in terms of seating. Anatomically designed front seats padded with a new full-foam material which absorbs and diminishes the effect of bumpy roads. And with backrests that can be adjusted to any body and any position. Right down to fully reclined.

Comfort in terms of internal atmosphere. No matter what the temperature outside, you con-



Distance no object.

Control it inside with the Golf's three speed blower, mixing heat and ventilation in just the right proportions.

And comfort in terms of the peace of mind that comes with riding in a safe car. The safety of a rigid passenger-cell compartment. Computer calculated crumple zones, front and rear. Burst proof safety locks on all doors. Special

safety anchorages for the front seats. Child proof locks on rear doors in the 5 door model. A safety steering column. And an interior free of sharp edges and neatly padded throughout.

When you've got a long way to go, the Golf goes a long way in comfort and safety.



Model illustrated: Golf

The Golf.

Don't think that because you opt for the least expensive Golf (the standard 1100 cc 3 door version illustrated above), you're going to have to do without the essentials of efficient, comfortable driving.

This model offers features which you can't always take for granted in other cars.

A three speed heating and ventilation blower, for instance. A two speed windscreen wiper system with additional tip-wipe contact. Electri-



It'll fit in with your finances.

cally operated windscreen washers. A heated rear window with a wash/wipe facility. Door window defrosters. Fully reclining front seats. And fitted carpets.

Then, of course, there's that lively but thrifty

1100 cc engine and the sophisticated chassis engineering. Plus the considerable creature comforts of the well appointed interior.

That's only the standard version. Now read on to see what the Golf L, LS, LD, GLS and GTi offer.

* The head restraints illustrated above are optional equipment.



Model illustrated: Golf L

The Golf L.

Maybe you like your economy motoring a bit on the luxurious side. If so the Golf L 5 door is for you.

Economical power is provided by either the petrol-miserly 1100 cc 50 bhp (DIN) engine or alternatively by the stingy 1500 cc diesel engine (in the Golf LD).

This specially developed Volkswagen diesel

engine is quite unusual for a passenger car in this class. Its performance compares favourably with the 1100 cc petrol version and as far as consumption goes it's in a class by itself.

Luxury features are immediately apparent outside and in.

Outside: grey plastic covered bumpers with chrome strip on upper face. Handsome waistline



Economy engines, luxury trim.

trim with profile mouldings. Brightwork framing around all windows.

Inside: distinctive upholstery with adjustable head restraints. A side swivelling driver's sun visor. Vanity mirror in passenger sun visor. Two assist straps. Ashtrays and armrests front and rear. Carpeting virtually everywhere. And two speed windscreen wipers with an intermittent

wipe facility.

Should you choose the luxury trim but wish to have a bit more power, there is the Golf LS 3 door. The LS has the larger 1300 cc power unit and a top speed of 93 mph.

Who could ask for anything more? Well, for those who could, flip the page.



Model illustrated: Golf GLS

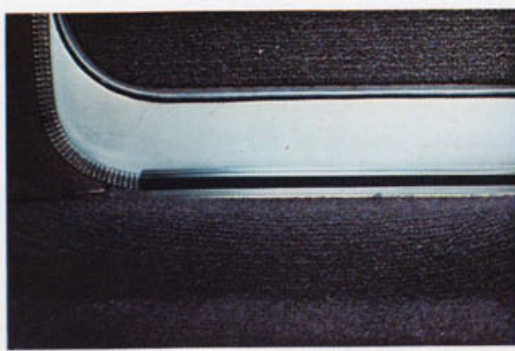
The Golf GLS.

Even the finicky motorists will find the Golf GLS to their taste. They will miss nothing that is needed for comfortable motoring in real style.

First of all it has everything that the Golf and Golf L have. And a great deal more as well. Bronze tinted glazing all round for distinctive looks and sun glare reduction. Padded instrument panel and steering wheel. Covered win-

dow ledges. Elegant carpeting throughout including inlays in doors. Equally elegant velour upholstery to the full-foam seats with adjustable front head restraints.

The Golf that makes driving easier with a rear window wash/wipe, a quartz electric clock, a handy placed cigar lighter, an exterior mirror adjustable from the inside and a large rev. coun-



The Golf with everything.

ter are all standard features on the GLS.

There's also variable instrument illumination for the most important controls and switches.

And to help you load and unload through the rear without the need for an extra set of arms, the tailgate has an automatic arrest in the uppermost position.

It goes without saying that two engine ver-

sions are available for the Golf GLS too. The 1300 cc, 60 bhp (DIN) engine for the 5 door Golf GLS and the powerful 1460 cc, 70 bhp (DIN) for the 5 door Golf GLS Automatic.

GLS. The most luxurious and desirable models in the Golf range.



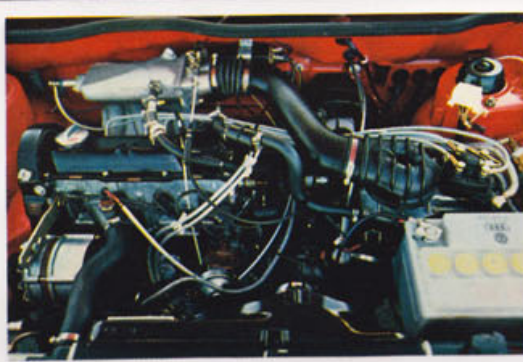
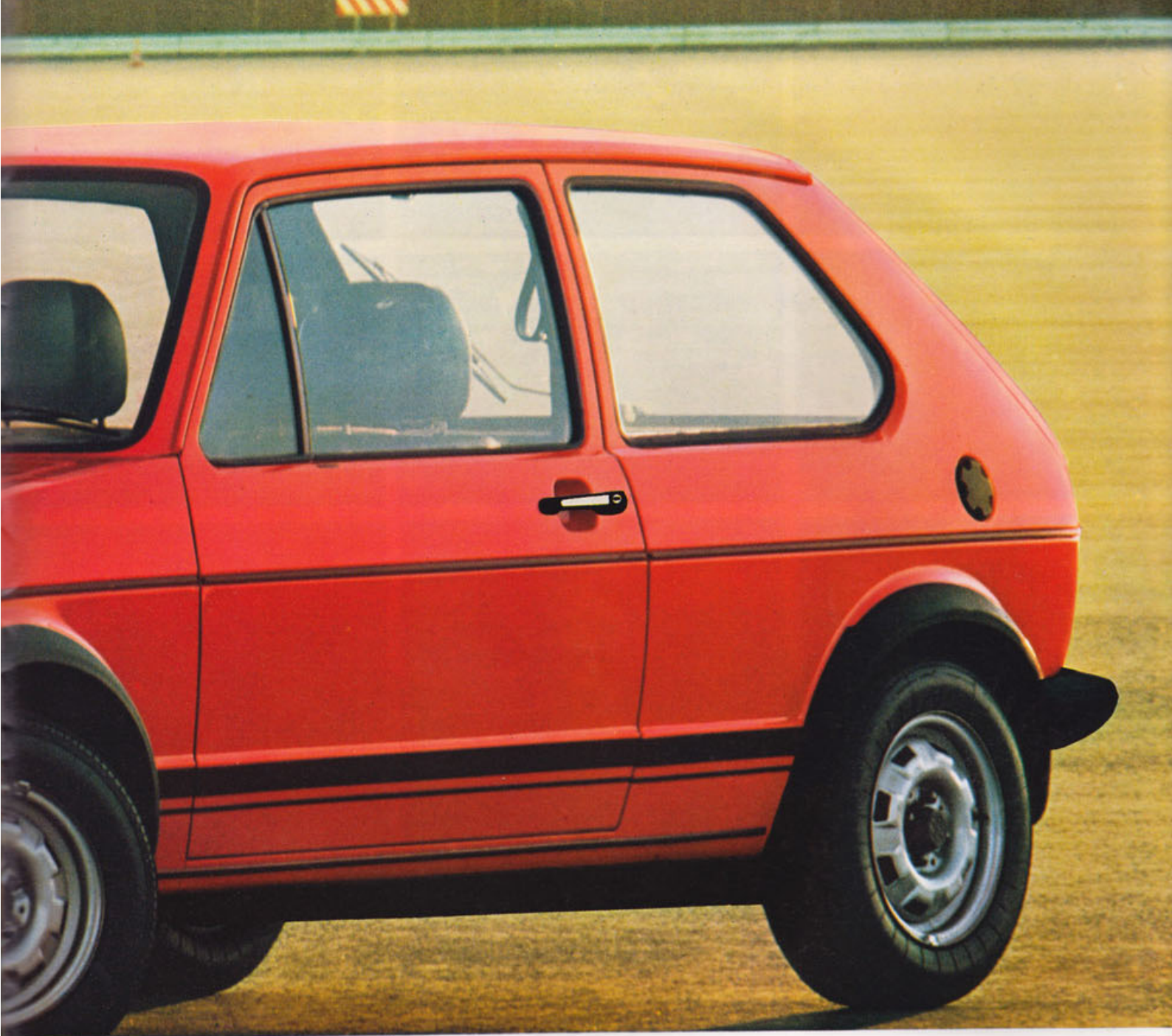
The Golf Gti.

The Golf GTi is easy to get to know. Nine ticks of the second hand on your watch pass as you are pressed back into the comfortable bucket seats and the speedometer needle rises from 0—60 mph. And it reaches 50 mph in a bare 5.9 secs.

The 1.6 litre engine produces a full 110 bhp (DIN) while its thirst for fuel stays well within bounds. A performance with economy made

possible by the novel K-Jetronic fuel injection system and a five speed gearbox.

The safety that goes with this performance is provided by a low-slung chassis with a wide track, carefully balanced springing and shock absorbers. Both axles are given additional stabilizers. The disc brakes are internally ventilated and a brake pressure regulator makes for the equitable distribution of braking power.



Nine seconds to get to know it.

There is also a special oil cooler and an enlarged radiator.

Two features to guarantee the Golf's customary virtues: reliability and durability.

We have selected three impressive colours for you to choose from — the mars red and silver metallic distinguished by matt black wide stripes and the black by silver stripes. Adding to the sporty appearance of the GTi's exterior are

handsome alloy sports wheels.

Inside there is large check cloth upholstery on the sporty seats. A three spoke steering wheel and a golf ball styled gear lever knob.

If you are interested in this model, then get ready for a test drive. Your Volkswagen and Audi dealer has a soft spot for sporty performance.



All the motoring world

Try getting 3,000,000 people in 120 countries throughout the world to agree about something. Impossible? Volkswagen did it with ease. With the Golf.

Out went the Golf to every conceivable

climate, condition and terrain. Back came the praise in every tongue from Arabic to Icelandic.

We think it's one of the most practical, economical and thoroughly thought-out cars in the world. We like its functional beauty. Its safety.



loves the Golf.

its agility and liveliness.

We like its comfort, equipment and versatility.

We like its truly Volkswagen attributes: fewer visits to the petrol pumps, less need for repairs and upkeep.

That's the word on Golf from around the world.

But let the last word be yours. Test drive a Golf soon, even today.

Bodywork:

All steel body with impact absorbing front and rear crumple zones and "safety cell" passenger compartment.

Engine: (Petrol)

Four cylinder in line engine with 1.1, 1.3, 1.46 or 1.6 litre capacity, transversely mounted in front. Overhead camshaft with toothed belt drive, water cooling with electrically driven, thermostatically controlled fan. Single downdraught carburettor with automatic choke. Bosch K Jetronic mechanical fuel injection system on 1600 cc version.

	Golf/Golf L	Golf LS/GLS	Golf GLS Auto	Golf GTi
Capacity:	1093	1272	1457	1588
Bore/stroke:	69.5 x 72 mm	75 x 72 mm	79.5 x 73.4 mm	79.5 x 80 mm
Compression Ratio:	8.0 : 1	8.2 : 1	8.2 : 1	9.5 : 1
Max. Output (DIN):	50 bhp at 6000 rpm	60 bhp at 5600 rpm	70 bhp at 5600 rpm	110 bhp at 6100 rpm
	*37 Kw at 6000 rpm	*44 Kw at 5600 rpm	*51 Kw at 5600 rpm	*81 Kw at 6100 rpm
Max. Torque (DIN):	58 lbs ft at 3000 rpm	69.9 lbs ft at 3500 rpm	80.9 lbs ft at 2500 rpm	102.9 lbs ft at 5000 rpm
	*79 Nm at 3000 rpm	*95 Nm at 3500 rpm	*110 Nm at 2500 rpm	*140 Nm at 5000 rpm
Battery:	12 volt 36 amp hr	12 volt 36 amp hr	12 volt 36 amp hr	12 volt 36 amp hr
Alternator:	35 amp capacity	35 amp capacity	45 amp capacity	45 amp capacity
Fuel type:	2 star (91 RON)	2 star (91 RON)	2 star (91 RON)	4 star (98 RON) Oil cooler

Engine: (Diesel version)

Four cylinder in line diesel engine with 1.47 litre capacity, transversely mounted in front. Overhead camshaft with toothed belt drive, water cooling with electrically driven, thermostatically controlled fan. Mechanical fuel injection with pre-heated starting.

	Golf LD
Capacity	1471 cc
Bore & Stroke	76.5 x 80 mm
Compression Ratio	23.5 : 1
Max. Output (DIN)	50 bhp at 5000 rpm
	*37 Kw at 5000 rpm
Max. Torque (DIN):	60.2 lbs ft at 3000 rpm
	*82 Nm at 3000 rpm
Battery:	12 Volt 63 amp hr
Alternator:	45 amp capacity

* New international units for technical measurements.
Approximations for conversion to DIN Standard 1333.

Transmission:

Gearbox, differential and double jointed drive shafts all combined in a compact transversely-mounted front drive unit.

Manual gearbox: All synchromesh four speed (Golf, L, LD, LS, GLS) and five speed gearbox (GTi) mounted transversely.

Clutch: Dry single plate, with self adjusting release mechanism.

Overall Ratios:

	Petrol Engines			Diesel Engine
	1100 cc	1300cc	1600cc	1471 cc
1st:	3.45	3.45	3.45	3.45
2nd:	2.05	2.05	2.11	1.94
3rd:	1.35	1.35	1.44	1.29
4th:	0.96	0.96	1.12	0.97
5th:	—	—	0.91	—
Rev.:	3.38	3.39	3.17	3.17
Final drive:	4.57	4.27	3.70	3.89
Automatic:	(GLS 1457 cc only) Three stage automatic gearbox with three driving ranges and reverse.			

Suspension:

Front: Independent suspension with struts, lower wishbone and telescopic shock absorbers. Anti-roll bar on Golf GTi model.

Rear: Independent suspension with torsion beam trailing arm axle and telescopic shock absorbers. Anti-roll bar on Golf GTi model.

Steering:

Maintenance-free self adjusting rack & pinion steering incorporating negative roll radius.
Turning circle: 32.8 ft.

Brakes:

Diagonal dual circuit system on all models. Brake servo on 1300 LS/GLS, LD and Auto GLS 1457 cc.

Larger brake servo and brake pressure regulator on GTi.

Front brakes: 9.4 ins diameter discs. Internally ventilated disc brakes on GTi.

Rear brakes: 7.1 ins diameter self-adjusting drums.

Tyres:

Radial Ply: 145 SR-13 on 4 1/2 J x 13 rims on Golf/L/LD
155 SR-13 on 5 J x 13 rims on Golf LS/GLS/GLS Auto
175/70 HR 13 on 5 1/2 J x 13 rims on Golf GTi

Dimensions: (Inches)

External:

Length: 150.2
Width: 63.4 (64.1 on GTi)
Height: 55.5 (54.9 on GTi)
Wheelbase: 94.4 ins
Track front/rear: 54.7/53.4 (55.3/54.0 on GTi)
Minimum ground clearance at permissible total weight: 4.9 (GTi: 4.6)

Internal:

Front seat depth/back height: 19.5/22.0
Headroom: front seat/roof: 37.4
Rear seat/roof: 35.4
Rear seat width/back height: 46.0/18.0
Width at shoulder height front/back: 51.4/51.0
Rear seat legroom: 39.4

Weights: (lbs/kg)

	Golf/L/LS/GLS	Golf LD	Golf GLS Auto	Golf GTi
Kerb weight:				
3 door:	1653/ 750			1786/ 810
5 door:	1708/ 775	1830/ 830	1830/ 830	
Max. payload:				
3 door:	992/ 450			926/ 420
5 door:	937/ 425	926/ 420	926/ 420	
Max. gross weight:				
3 and 5 door:	2646/1200	2756/1250	2756/1250	2712/1230
Permissible axle loads:				
Front:	1345/ 610	1477/ 670	1477/ 670	1477/ 670
3 and 5 door:				
Rear:	1323/ 600	1323/ 600	1323/ 600	1257/ 570
3 and 5 door:				

Capacities:

	Golf/L/LS/GLS/LD	Golf GLS Auto	Golf GTi
Max. towing capacities: (lbs/kg)			
*Trailer braked:	1764/800	2205/1000	2646/1200
Trailer unbraked:	882/400	882/ 400	882/ 400
Fuel tank:	9.9 galls / 45 litres		
Luggage capacity:			
Rear seat upright:		13.0 cu. ft.	
Rear seat down:		38.9 cu. ft.	

* U.K. legislation states if a trailer weighing more than the kerb weight of the vehicle is being towed, a speed restriction of 40 mph will be placed on the vehicle.

Safety Features:

All steel body with "safety cell" passenger compartment. Impact absorbing front and rear crumple zones. Stabilised steering/braking system incorporating negative roll radius.

Diagonal dual circuit braking system.

Collapsible steering column.

Safety steering wheel.

Anti-dazzle rear view mirror.

Padded dashboard and sun visors.

Child safety locks on rear doors.

Hazard warning lights.

Inertia reel front seat belts with single hand operation.

Specifications and Equipment.

Performance:

	Golf/ L	LD	LS/ GLS	GLS Auto	GTi
Top speed: (mph)	87	87	93	95	112
Acceleration (secs)					
0—50 mph:	10.0	11.5	8.6	9.4	5.9
0—60 mph:	15.8	18.0	13.5	14.7	8.8
*Fuel Consumption (mpg):			**		
Urban cycle:	33.2			28.0	23.3
Constant 56 mph:	42.8			38.6	38.2
Constant 75 mph:	32.1			26.9	30.4
*Fuel Consumption:					
(litres per 100 km)					
Urban cycle:	8.5			10.1	12.1
Constant 90 km/hr:	6.6			7.3	7.4
Constant 120 km/hr:	8.8			10.5	9.3
Fuel Consumption (DIN):					
Under good					
conditions:		43.5			
At a steady:					
50 mph:		62.6			
60 mph:		50.3			

* Official Government figures.

** Government figures are not yet available for 1300 cc Golf LS and GLS.

Equipment:

The following information provides details on the equipment supplied as standard on the models shown. Please note, however, that this specification may be subject to change without prior notice. It is, therefore, recommended that you check with your Dealer at the time of ordering regarding changes that have taken place.

External:

Pneumatic tailgate support
Parking lights
Reversing lights
Hazard warning lights
Heated rear window
Driver's door mirror
Lockable petrol cap
Two speed wipers
Electric windscreen washers
Rear wheel arch stone guards
PVC underbody protection
Rear wash/wipe system
Rear fog lamp

Additional on L/LD/LS/GLS:

Intermittent wipers with automatic wash-wipe
Radiator/window/bumper trim
Waistline trim with rubber inserts
Halogen headlights (LS, GLS only)

Additional on GLS:

Bronze tinted glass
Hub caps

Additional on GTi model in addition to basic equipment:

Radiator grille with red ornamental surround
GTi inscription on radiator grille
Halogen headlights
Large front spoiler
Air blade on windscreen wiper on driver's side
Black/silver side stripes
Wider wheel arches with black plastic bead
Laminated windscreen
Rear window with black surround
Intermittent wash/wipe
Alloy sports wheels

Internal:

Carpets
Fully reclining front seats
Folding rear seat
Cloth upholstery

3 speed heater/ventilator blower

Anti-dazzle rear view mirror

Passenger shelf

Padded sun visors

Courtesy light

Coathooks

Glove box

Luggage compartment cover

Dashboard ashtray

Brake warning light

Child-proof door locks on rear doors (4 door models only)

Additional on L/LD/LS/GLS models:

Improved carpeting
Improved interior upholstery
Vanity mirror in passenger visor
Swivelling driver's visor
Padded armrests
Rear ashtray
Two assist straps
Adjustable head restraints
Rev. counter (LS and GLS only)

Additional on GLS models:

Heavy quality seat upholstery
Door linings with carpet inlay
Carpeting matched to upholstery colour
Brushed aluminium fascia
Central instrument console
Quartz electric clock
Padded steering wheel
Exterior driver's mirror adjustable from the inside
Lockable glove box
Trip mileage recorder
Water temperature gauge
Cigarette lighter
Panel rheostat
Illuminated instrumentation
Foamed window ledge

Additional on GTi model in addition to basic equipment:

Black leatherette headlining
Swivelling driver's visor
Vanity mirror in passenger visor
Two assist straps
Rear ashtray
Padded armrests
Glovebox cover
Sports steering wheel
Golf ball type gear lever knob
Central console with clock and oil temperature gauges
Water temperature indicator lamp
Trip mileage recorder
Panel rheostat
Cigarette lighter
Illuminated instrumentation
Large rev. counter
Twin-tone horn
Fully reclining front sport seats with large check upholstery
Adjustable head restraints

Factory Fitted Optional Equipment:

Adjustable head restraints (N model only)
Laminated windscreen
5 J x 13 light alloy sports wheels
175 x 70 SR 13 steel radial tyres
Sliding steel sunroof
Two halogen foglights
Green tinted glass all round with laminated windscreen

Dealer Installed Optional Extras:

Many items of equipment are available on the Golf range and a few are listed below.
Fog and spot lamps, complete radio installation, mudflaps, tow bar, sports road wheels, roof rack, door storage trays.

Please consult your Volkswagen Dealer for full details on the price and availability of equipment and accessories.

Cloth upholstery for Golf N Cloth upholstery for Golf L/LD/LS (striped)



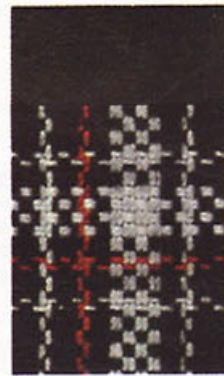
black/white – AG black – BQ gazelle – BS van dyck – BT ivy – BU

Cloth upholstery for Golf GLS (honeycomb)



black - CA gazelle - CB ivy - CD

Cloth upholstery for Golf GTi (large check)



black/red – EW black/silver – EY

[illegible]

Kindly refer to the back page for up-to-date amendments to specification and please confirm these with your authorised Volkswagen dealer at the time of placing your order.

Print processes do not allow exact reproduction of colours.
This applies to the exterior colours as well as to the upholstery.

and Colour Combinations.

Exterior colours



lemon yellow

B2 -



mexico beige

D9 -



mars red

G6 -



malaga red

H5 -



florida blue

J1 -



alpine white

P1 -



azores metallic

W3 -



indiana red metallic

W9 -



inari silver metallic

Y4 -



canyon metallic

Y8 -



onyx metallic

Z2 -



diamond silver metallic

Z4 -



black

9000 -

The Golf. Ask for a test drive.